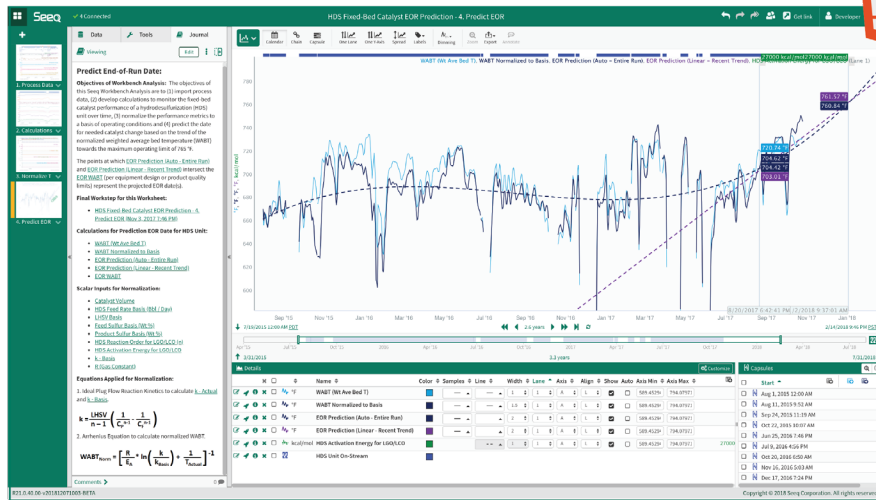


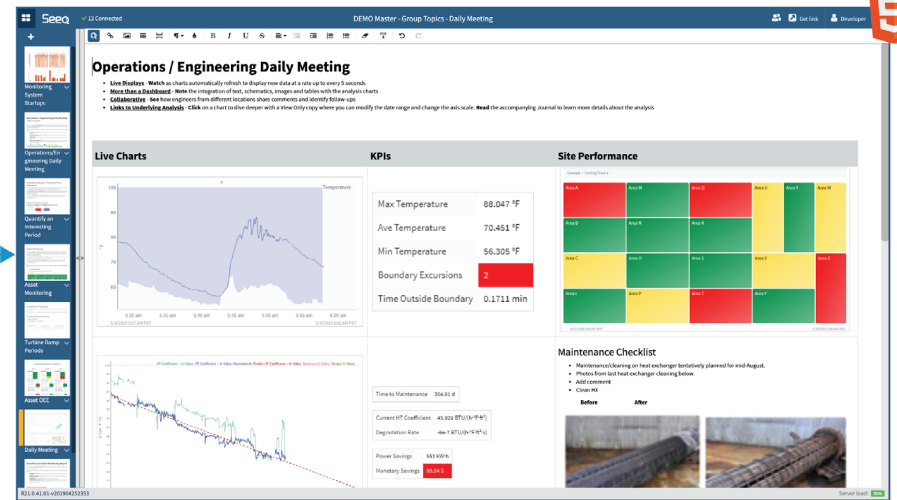
Seeq® ARCHITECTURE

Advanced Analytics for Process Manufacturing | www.seeq.com

Seeq WORKBENCH



Seeq ORGANIZER



Seeq Server

On Premises or In the Cloud



Manufacturing Data

See full list at: info.seeq.com/Supported-Data-Systems



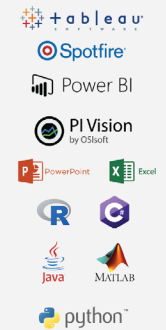
SQL-Based Data



Custom Sources



Integration Options

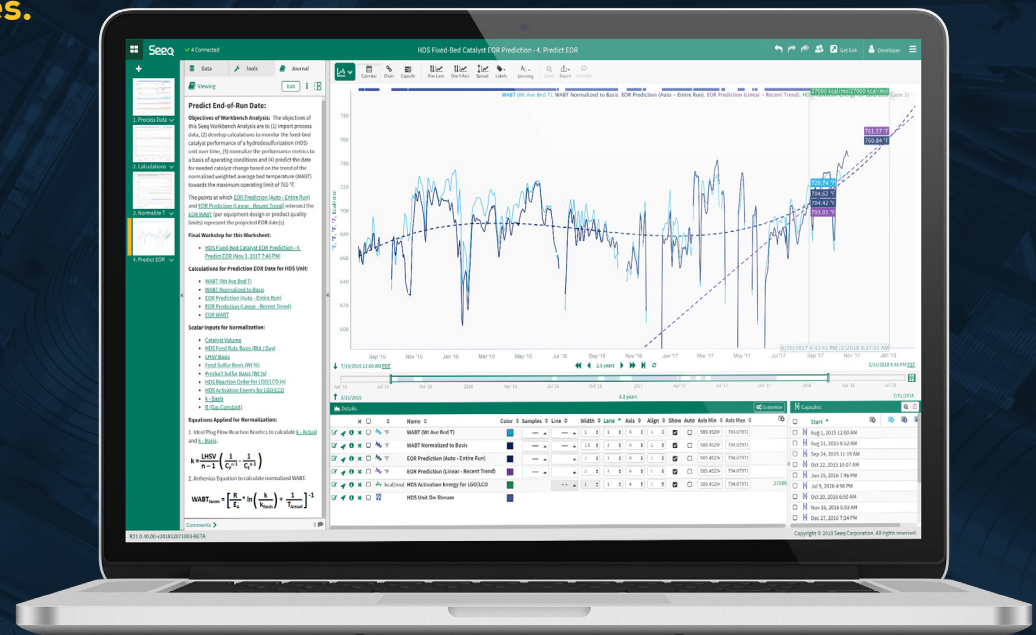


Spreadsheets weren't designed for time series data analytics. Seeq is.

Time series data analysis poses unique challenges.

With Seeq®, difficult and time-consuming work in spreadsheets is a thing of the past. Seeq's multiple applications enable you to rapidly investigate and share insights from data stored in multiple enterprise data historians, such as OSIsoft PI, Honeywell PHD, and GE Proficy, as well as contextual data sources such as SQL Server, Oracle, and MySQL.

Seeq's support for time series data and its challenges – connecting, displaying, interpolating, cleansing, and contextualization – relieves you of hours and days of fruitlessly searching for insights in your process manufacturing data. Seeq helps you get more value from the data that you've already been collecting, and gives organizations data transparency and the ability to execute on those insights.



Learn more at www.seeq.com



Asset Optimization



Situational Awareness



Investigation & Troubleshooting



Operational Excellence